

Langue: [EN](#) | [DE](#) | **[FR](#)** | [IT](#) | [ES](#)
[Offres & Réservations](#) [Information & Services](#) [Swiss TravelClub](#) [La compagnie](#)
→ **Réservez votre vol**

- [Chercher par tarif](#)
- [Chercher par horaire](#)
- [Afficher les réservations](#)
- [Service Fee](#)
- [Réservez votre hotel](#)
- [Réservez votre voiture](#)
- [Offres spéciales](#)
- [Holiday & Charter](#)
- [Votre profil](#)

Best Price [swiss.com](#)[Contact direct](#)
[Date du voyage](#) > [Vols & Tarifs](#) > **[Confirmation Tarif](#)** > [Informations Passager\(s\)](#) > [Confirmation](#)
Votre itinéraire

Les tarifs ne sont garantis qu'à partir du moment où vous recevez une référence de réservation

No de vol	Compagnie	De	À	Départ	Arrivée	Classe
LX 1822	SWISS	Genève	Athènes	11:30 - 03 nov	15:10 - 03 nov	Economie
LX 1823	SWISS	Athènes	Genève	15:45 - 07 nov	17:40 - 07 nov	Economie

Passagers	Composition tarifaire	Montant en	
Adultes	Tarif	CHF	409.00
	Surtaxe carburant, Taxes aéroportuaires, SWISS Service Fee ?	CHF	160.00
	Total 1 adult	CHF	569.00
Total		CHF	569.00

Êtes-vous en possession d'un code promotionnel?

Si tel est le cas, saisissez le ici:

 [?](#)

Veillez lire nos [conditions de prix](#) ainsi que [les conditions de transport](#) et confirmer que vous les acceptez avant de poursuivre la réservation.

J'ai lu les conditions de prix et les conditions de transport de SWISS et les accepte.



Frequently Asked Questions

I have a question about



IAAF Permit



A.I.M.S. Calendar



-Dates: 2005 Race/2006 Race

-Course

-Registration

-Entry Fee

-Participant Cut Off

-Qualifying Time

-Race Packet

-Start Times

-Timing/ChampionChip

-Transport to Start

-ClothesTransportation /Clothes check

-Can I bring my own drinks to the race? Where and when should I hand them in?

What is the date of the 2005 Athens Classic Marathon?

Sunday, November 6, 2005.

[Return toTop](#)

What is the date of the 2006 Athens Classic Marathon?

Sunday, November 5, 2006.

[Return toTop](#)

What is the course of the 2005 Athens Classic Marathon?

The course of the 2005 Athens Classic Marathon is the Classic Olympic Course, that is the same as the one in the first contemporary Olympic Games in 1896 and the Official Olympic Course of Athens 2004. It starts from the Marathon Village and ends at the Kallimaramaron-Panathinaikon Stadium in the center of Athens. For more information, please [click here](#).

[Return toTop](#)

How do I register for the 2005 Athens Classic Marathon?

On line registration is now available in our site, [please click here to register](#).

[Return toTop](#)

What is the entry fee for the 2005 Athens Classic Marathon?

The entry fee is 100 Euro for the Marathon Race and 60 Euro for the 10?m Road Race covering a commemorative medal and certificate of attendance, a T-shirt, a key-chain, a poster, the pasta party, and transportation from the Panathinaiko Stadium in central Athens to the starting point of the race.

You can get a discount of 25 Euro for the Marathon Race and 20 Euro for the 10?m Road Race if you register before September 30.

[Register on-line with Credit Card and save another 5 euro.](#)

[Return toTop](#)

Does the Athens Classic Marathon have a maximum number of participants?

The Athens Classic Marathon has no maximum number of participants so far.

[Return toTop](#)

Do I need a qualifying time to be eligible for the Athens Classic Marathon?

No, however there is a time limit of 6 hours, after which runners will continue running AT THEIR OWN RESPONSIBILITY.

[Return toTop](#)

How do I receive my Race Packet?

Race Packets including race numbers and Chips will not be mailed. All packets and plastic bags must be picked up at the STADIUM OF PEACE AND FRIENDSHIP at Neo Faliro.

The race documents desk and the information office will be open:

Thursday 3 November 11:00 - 21:00

Friday 4 November 09:00 - 21:00

Saturday 5 November 09:00 - 19:00

There will be NO Race Day Packet Pick-up

[Return toTop](#)

What are the start times?

Marathon Race 08:30

10Km Road Race 09:00

[Return toTop](#)

Who will be the timer of the Athens Classic Marathon?

The Athens Classic Marathon 2005 will use the **Championchip** to register the runners interval and finishing times for third year in a row.

Important: Each Marathon or 10Km Road Race participant must wear a **Championchip**. From now on the Championchip will be referred to as chip.

The timing (of both Marathon and 10Km Road Race) will be realised by **Accurate C.I.T. (Championchip Hellas)** official Timer and Distributor of **Championchip World**.

All participants will be issued a chip that **MUST** be returned upon completing the Marathon or the 10Km Road Race.

There will be a 6m wide start and timing points at 10km, 1/2 Marathon, 30km and finish.

[Return toTop](#)

How will I get to the Start?

Buses will depart from Kallimarmaron-Panathinaiko Stadium to the starting point (town) of Marathon from 06:00 till 06:30 for the Marathon race. After the last bus has left the Stadium (06:30) all runners will have to get to Marathon on their own.

ATTENTION: Marathon route closes at 08:00.

[Return toTop](#)

What about clothes transportation?

Plastic bags will be issued by SEGAS for all participants with their race numbers and chips to put in all their extra clothing items. These will be put in the buses provided by SEGAS before the beginning of the race, and can be picked up at the Panathinaiko Stadium.

[Return toTop](#)

Can I bring for the race my own drinks ? Where should I hand them and when?

In the Athens Classic Marathon you may use your own personal drinks. You should hand them out at the Stadium of Peace and Friendship the evening before the race. Your personal race number should be written clearly on the bottles. Do not forget to write at which refreshment station you wish them to be given back to you (only for 10km, 15km, 20km, 25km, 30km, 35km, 40km).

[Return to Top](#)

In case you have your own questions, do not hesitate to e-mail them to us to the following address:

info@athensclassicmarathon.gr



**Start of the
24th Athens Classic Marathon
November 5, 2006, 8:30 am**

299 days **16** hours **29** minutes



ALPHA BANK

Latest news

- Dear runners... (16/11/05)
- 23rd Athens Classic Marathon & 10.000m Road race completed. (6/11/05 16:30)
- Participation list 23rd Athens Classic Marathon & 10km Road race (31/10/05)

Visitor: **4 2 8 3 6 0**

© Copyright SEGAS 2003 - [Credits](#) - [Terms of use](#)



**DAILY SHCEDULE OF THE
23rd ATHENS CLASSIC MARATHON & 10Km ROAD RACE 2005**



IAAF Permit

The collection of race numbers, electronic timing chips, and commemorative packages for the Marathon race will take place at the FALIRON OLYMPIC COMPLEX / INDOOR STADIUM OF FALIRO - TAE KWON DO HALL
(How can you get there?)



A.I.M.S. Calendar

THURSDAY 3-11-2005

11:00 - 20:00 : * STADIUM OF PEACE AND FRIENDSHIP *
Distribution of race numbers, electronic timing chips, and commemorative packets both for the Marathon and the 10Km Road Race

12:00 : PRESS



FRIDAY 4-11-2005

09:00 - 20:00 : Distribution of race numbers, electronic timing chips, and commemorative packets both for the Marathon and the 10Km Road Race.



SATURDAY 5-11-2005

09:00 - 19:00 : Distribution of race numbers, electronic timing chips, and commemorative packets both for the Marathon and the 10Km Road Race.

17:30 : Opening Ceremony

19:00 : PASTA

SUNDAY 6-11-2005

08:30 : MARATHON START - MARATHON

09:00 : START of the 10km ROAD RACE - PANATHINAIKO STADIUM

**The President of the ACM Organising Committee
GEORGIOS CHALKIDIS**



Start of the
24th Athens Classic Marathon
November 5, 2006, 8:30 am
298 days 17 hours 22 minutes



Latest news

- Dear runners... (16/11/05)
- 23rd Athens Classic Marathon & 10.000m Road race completed. (6/11/05 16:30)

Disponibilité des chambres, Informations, & Tarification

[Sélectionner un autre](#)

Réservez en ligne ou par téléphone



Appel gratuit depuis l'Europe: **00 800 2066 2066**



Vous avez choisi une offre spéciale Intern
Réserver aux Prix Spéciaux Internet vous permet de f
Pourquoi ces tarifs sont-ils si avantageux ? [Cliquer ici](#)



METROPOLITAN HOTEL

[plan](#) [Conv](#)

★★★★★ NEAR THE PORT AND CITY CENTER

385 Syngrou Ave - Athens, Greece 175 64

de 3 nov. 2006 à 7 nov. 2006

La liste correspond aux prix des chambres doubles, sauf précision inverse ; les taxes et charges ne sont pas comprises. Voir [Foire aux quest](#) détails.

Type de chambre

Ven sam dim lun

Chambre Catégorie Supérieure

- Lit Double/Lits Jumeaux

138,00 € 138,00 € 138,00 € 138,00 €

624,20 € Total*

[Voir la politique d'annulation](#)

Réservez!

Chambre Double/Lits Jumeaux

Executive

167,00 € 167,00 € 167,00 € 167,00 €

755,56 € Total*

[Voir la politique d'annulation](#)

Réservez!



Cliquez sur la photo pour visualiser



The Metropolitan is a luxury hotel situated between Athen's city center and the Port of I renovated Metropolitan is just 15 minutes from Constitution Square, as well as the port. convenience, the hotel operates a complimentary shuttle bus to and from Syntagma Sq From there, guests can walk to the fashionable Kolonaki Square, Emmou and Stadiou s the Metropolitan is a cosmopolitan and modern hotel, with an attractive contemporary c and hospitality offered by the staff is traditional. The Metropolitan features some outsta include a variety of food and beverage outlets.

The guests rooms are also quite attractively appointed and they are equipped with a full range of amenities, as well as quality furnishe facilities include a beautiful, outdoor pool area, and an indoor pool as well. Guests can dine onsite, 24-hours a day at the hotel's restau specializing in Greek and European Specialties. Outside at the Veranda Restaurant, guests can enjoy a great view of the Saronic Gulf. bar, a sushi bar and a confectionary onsite. This hotel offers ample options for dining, and it is convenient to shopping, attractions and

Equipements de l'établissement

- Business Center
- Pets Not Allowed
- Sauna
- Children Stay Free - Under 12 years old
- Cribs
- Lounge
- Wake Up Service
- Bar/Lounge
- Restaurant(s)
- Fitness Equipment
- Wheelchair Accessible
- Meeting room (small groups)
- Babysitting or child care
- Parking (valet)
- Photocopy machines
- Swimming pool - outdoor
- Gift shop or newsstand
- Concierge desk
- Secretarial services - Monday - Saturday
- Garden

Points d'intérêt aux alentours

- Syntagma Square 3 Miles / 5 Kilometers
- Piraeus Port 3 Miles / 5 Kilometers

Accès

From Eleftherios Venizelos Airport:
Follow Attiki Avenue out of airport:
Follow signs to Vari to coastal road at Voula.
Turn right on Syngrou Avenue.
The Metropolitan Hotel is on the right hand side.

Informations sur l'établissement

- Check In Time - Noon
- Check-out Time - Noon
- Credit Card Required

Mentions légales

- Votre carte de crédit sera débitée du montant total de la réservation dès confirmation. Cf [Conditions d'utilisation](#).
- Les exigences de taille de lit et de type de chambre (fumeur ou non) seront soumises à l'hôtel. Leur acceptation n'est toutefois pas
- La chambre qui vous sera attribuée peut ne pas correspondre à la photo du site.
- A votre arrivée, une pièce d'identité vous sera demandée.
- Ces prix ne sont disponibles que sur nos sites et par nos centrales de réservations ; vous ne pouvez en aucun cas y prétendre en directement car il ne dispose pas de nos tarifs dans son système.
- En effectuant cette réservation vous en acceptez les termes et conditions, y compris la politique d'annulation et les termes et conditions [d'utilisateur](#).

Recherche d'hôtels

Arrivée : 

Départ: 

Chambres : Adultes : (min 18 ans) Enfants : (jusqu'à 17 ans)



Disponibilité des chambres, Informations, & Tarification

[Sélectionner un autre](#)

Réservez en ligne ou par téléphone



Appel gratuit depuis l'Europe: **00 800 2066 2066**



Vous avez choisi une offre spéciale Intern
Réserver aux Prix Spéciaux Internet vous permet de f
Pourquoi ces tarifs sont-ils si avantageux ? [Cliquer ici](#)



HOTEL MARINA

[plan](#) [Conv](#)

★ ★ ☆ ☆ ☆ CITY CENTER

13, Voulgari Str. - Athens, Greece 10437

de 3 nov. 2006 à 7 nov. 2006

La liste correspond aux prix des chambres doubles, sauf précision inverse ; les taxes et charges ne sont pas comprises. Voir [Foire aux quest](#) détails.

Type de chambre

	Ven	sam	dim	lun
Chambre Double Supérieure	55,00 €	55,00 €	55,00 €	55,00 €

250,36 € Total*

Petit déjeuner continental

[Voir la politique d'annulation](#)

Réservez!

Chambre Triple Supérieure	73,00 €	73,00 €	73,00 €	73,00 €
---	---------	---------	---------	---------

332,40 € Total*

Petit déjeuner continental

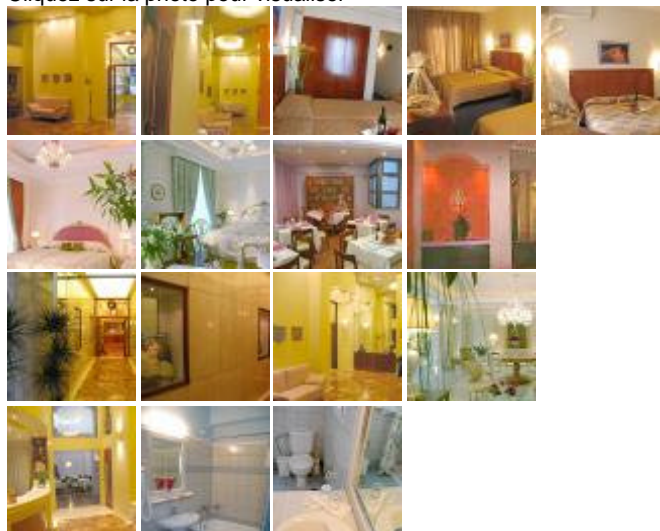
[Voir la politique d'annulation](#)

Réservez!



"Family owned and operated"

Cliquez sur la photo pour visualiser



Marina is a family owned and operate hotel, with a very friendly and warm ambiance. of Athens, it is within walking distance to the main attractions, such as the Partheon ; along with facilities like the shopping center. The hotel has 81 rooms, with air-conditior telephone, satellite TV, mini bar, and ironing press (upon request).

The city is bounded on three sides by Mt. Parnitha, Mt. Pendeli and Mt. Hymettos. Within Athens there are no less than eight hills, of w/ Lykavittos are the most prominent. The hills provide a peaceful respite from the clamor of the city, and offer stunning views to the glist Saronic Gulf, the city's boundary on the south side. The streets of Athens (clearly signposted in Greek and English) now meld imperce city's port.

Equipements de l'établissement

- Wake Up Service
- Children Stay Free - Under age of 12 yrs
- Complimentary Breakfast
- Dry Cleaning Service
- Bar/Lounge
- Garden
- Security guard
- Meeting room (small groups)

Points d'intérêt aux alentours

- National Theater
- National Museum
- Museum BEnaki

-Museum Acropolis
Down town Plaka, Keramelkos.

Accès

From El Veniselos Airport: Follow the direction Athina and Marathon-Mesogeion. Then take Alexandras Avenue, follow Omonia Directi take Agiou Konstantinou Street and take the second street on the left.

Informations sur l'établissement

- Check In Time - Noon
- Check-out Time - 11 Am

Mentions légales

- Votre carte de crédit sera débitée du montant total de la réservation dès confirmation. Cf [Conditions d'utilisation](#).
- Les exigences de taille de lit et de type de chambre (fumeur ou non) seront soumises à l'hôtel. Leur acceptation n'est toutefois pas
- La chambre qui vous sera attribuée peut ne pas correspondre à la photo du site.
- A votre arrivée, une pièce d'identité vous sera demandée.
- Ces prix ne sont disponibles que sur nos sites et par nos centrales de réservations ; vous ne pouvez en aucun cas y prétendre en directement car il ne dispose pas de nos tarifs dans son système.
- En effectuant cette réservation vous en acceptez les termes et conditions, y compris la politique d'annulation et les termes et condi [d'utilisateur](#).

Recherche d'hôtels

Arrivée :

Départ:

Chambres : Adultes : (min 18 ans) Enfants : (jusqu'à 17 ans)

